



ALL TYPES OF INDUSTRIAL
FABRICATION WORK ,
ARCADE WORK
& PAINTING WORK.



MAA JWALA ENTERPRISES

TABLE OF CONTENTS

1 ABOUT US

2 PRODUCT OVERVIEW

- A - METAL & STAINLESS STEEL FABRICATION
- B - STRUCTURE FABRICATION
- C - STURUCTURE BULDING
- D - CHAIN LINK FENCE

3 MACHINE SHOP PRECESSION

4 INDUSTRIAL & RESIDENT PAINTING

- E - WHY US IN PAINTING
- F - SERVICE WE OFFER

5 SAFETY POLICY

6 SAFETY PROGRAM



ABOUT US

MJ Enterprise was established in 2024. It has grown & accumulated business experience to be one of the leaders for contracting business in Gujarat.

MJ enterprise continues to respond to the market place with new product lines, and looking always to improve the quality and standard by introducing new system for metal product and industrial painting and Metal Structure, Fire Pipelines work, stainless steel, galvanized steel hand rails, and wall painting, Stretcher Painting and all kind of metal or painting work with high standard. With complicated machine aid and highly trained skilled manpower resource that meet international standard. We of MJ Enterprise is also dedicated in service to public and industries plant project sector.

MJ Enterprise main activities are focused on development of system marketing and technical support

» ABOUT US

We Make the Best

Honesty	Honesty is our competitive strength
Creat Thinking	Create thinking would change the whole world.
Harmonious Mind	A little consideration is a great pleasure
Individual Responsibility	Responsibility of one person would be bring a life time customer
Passion For Job	Passions is a key to the success
Challenging Dreams	Only a challenger has a brighter future



» VISION & MISSION

We have been providing our uninterrupted services since last 11 years and successfully executed major projects in most Private Sector, Government Sector & Semi- Government Sectors & Public Sectors in the fields of Petro Chemicals, Chemicals, Pharmaceuticals, Refineries, & Fertilizers, Agro chemicals, Thermal Power Plants, Industrial Plant Maintenance & Shut Down Jobs.

We proud to say to work with our various reputed client repeatedly to construct & accomplished the projects. It shows that we proved our commitment, quality & time bonding services with our large & unbeatable workmen team. We also carried out Turnkey Projects which includes designing to commissioning parts of projects too.

Our highly experienced team members are dedicated to the creation of innovative solutions based on client specific requirements and are prepared to design, construct and troubleshoot, even the most complex installations. Since our reputation is based on customer satisfaction, we are committed to complete project from Conception to Implementation.



» PRODUCT OVERVIEW

A. METAL & STAINLESS STEEL

MJ Enterprise is specialized for fabrication and industrial painting of all kind of metal and painting works as required by project's Specification.

MJ Enterprise supplied material are complying with standard requirement.

- Embedded Plate with Anchor fastener
- Steel Angle (L-Shape, T-Shape etc.)
- Dowel Bar, Grating c bar
- Checker Plate
- Ladder with safety cage
- Handrails (At any shape)
- Metal plate, Angle Brackets
- I-beam, H-beam, T-beam, C-beam etc.



B. STRUCTURE FABRICATION

MJ Enterprise is specialized for fabrication & Erect the metal structure as below:-

MJ Enterprise supplied material are complying with standard requirement.

- Heavy Structure: Building, Rack, Pier, Ladder/Plate form,Tower etc.
- Pipeline: Water, Chemical, A/C etc.
- MS Dusting line abrication ork.
- Structure fabrication and sheet fixing work (Canopy)
- Stainless Steel Tank, Pipeline Fabrica



C. STRUCTURE BUILDING

Mj Enterprise Offers Ms & Ss Structure Building, Which Are Manufactured To The Highest Quality Standard & Commitment By The Satisfaction of clients.

Mj Enterprise Has An Experience To Make The Building Like Factory Industry, Heavy Yards Or Infrastructure, Warehouses, Dock Level Shed Leisure Structure And Etc

Building Dimensions:

Building-a (320 Mtr. Length X 65 Mtr.

Width X 24 Mtr. Height)

Building-b (320 Mtr. Length X 64 Mtr.

Width X 24 Mtr. Height)



D. CHAIN LINK FENCE

MJ Enterprise Supply and install PVC Coated & Galvanized Fence with different style & Specification which aeady is also welcome.

We offer all kinds of wire Mesh in Galvanized iron, Stainless Steel or PVC Coated Wire.

Our Fence experience ranged from all phase of residential ence consstructiono the most difficult and specifcaation-based ind trial security fencing applicacations, including sportadiums, power plant and high security airport fence job.Weve fenced in buildings, inside of buildings on roofs, in fresh and saltwater. Our full fabrication shop, xperiened staff, wide range of standard and specialty fence parts inventory, and long-standing relationshi s with top fence manufactures.

PVC COATED WIRE LINK BOUNDARY FENCE WITH GATE



HIGH SECURITY FENCE



BUSINESS AREAS & SERVICES

Mechanical Services :-

MJ Enterprise is specialized in delivering excellent Indo-Commercial structure services to our valuable clients. Our team of employees and professionals working at Asian Sky are responsible for providing quality services and construction related jobs to our esteemed clients. Our meticulous Mechanical engineers are experts and have versatile knowledge in their related domain and hence employ their structural designing skill and industrial construction technology in such a manner that it meets the needed demands of the clients. Furthermore, all of our experts make certain that they provide a unique and exquisite engineering structure within the stipulated timeframe to the clients. We offer a full range of services in the field Project, Plant Maintenance and Plant Shut Down.



Pre Engineered Buildings Services :-

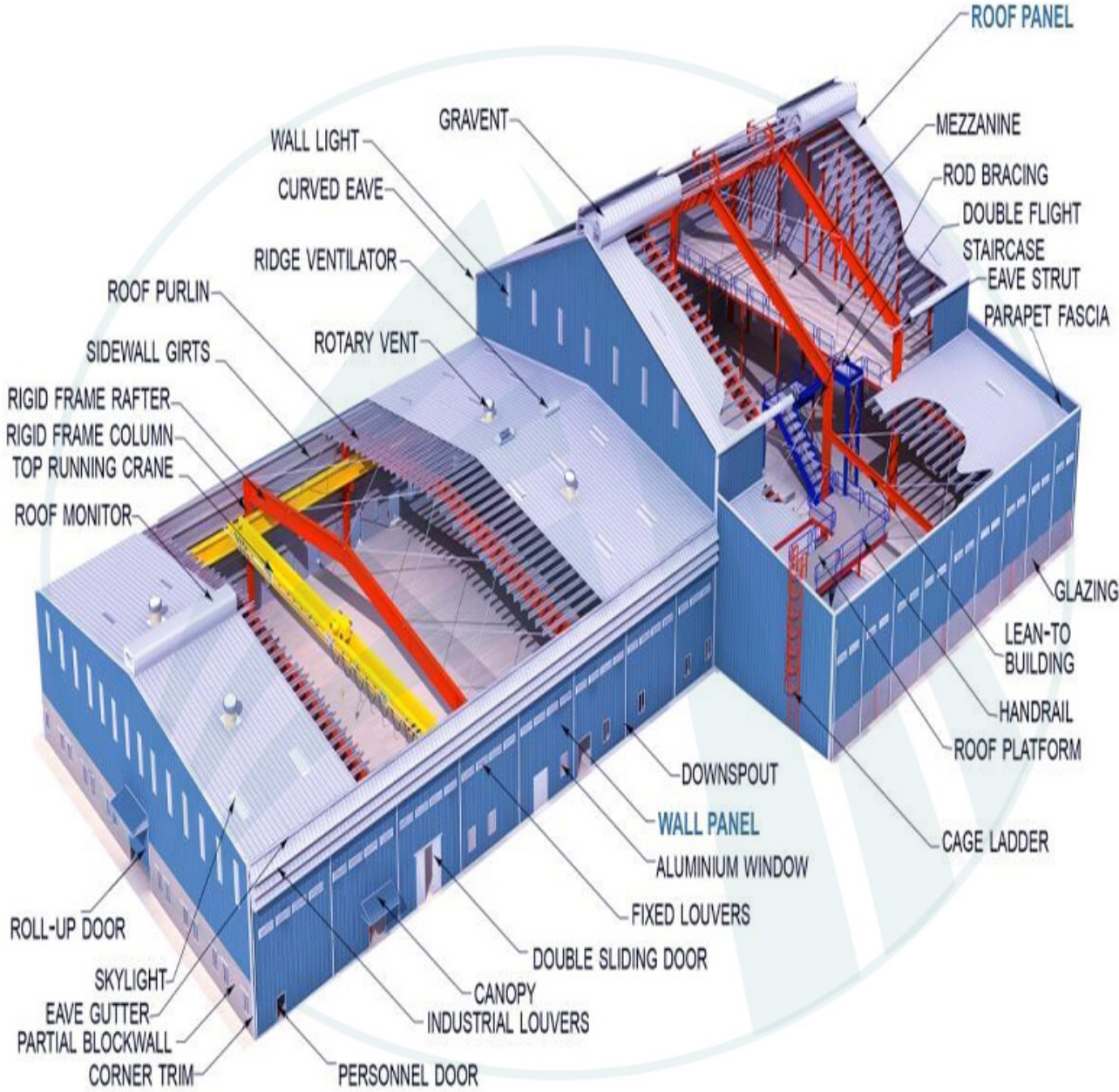
As Infrastructure construction across the country is combining speed, economy, safety, strength and aesthetics at awe inspiring levels, steel structures, until now a primary foundation element, have risen as complete solutions in construction projects for various structural requirements. Structural steel buildings or PEBs are addressing parameters including finishes, environment control and life cycle with a panache derived from product innovation and technology advancement.

Pre Engineered Building is a metal building designed and fabricated in the factory premises; all components are shipped to site and are assembled and erected at site with nut bolts/ anchor bolts.

Primary Framing System	Secondary Framing System	Sheeting & Claddings	Accessories
Rigid Frames	Roof Purlins	High Rib	Turbo Ventilators
End Wall Frames	Wall Girts	Low Rib	Ridge Ventilators
Wind Bracing	Eave Struts	Standing Seam	Louvers
Crane Brackets	Sag Rods		Skylight Panels
			Insulation
			Sliding or Roll up Door
			Stair Case

BUSINESS AREAS & SERVICES

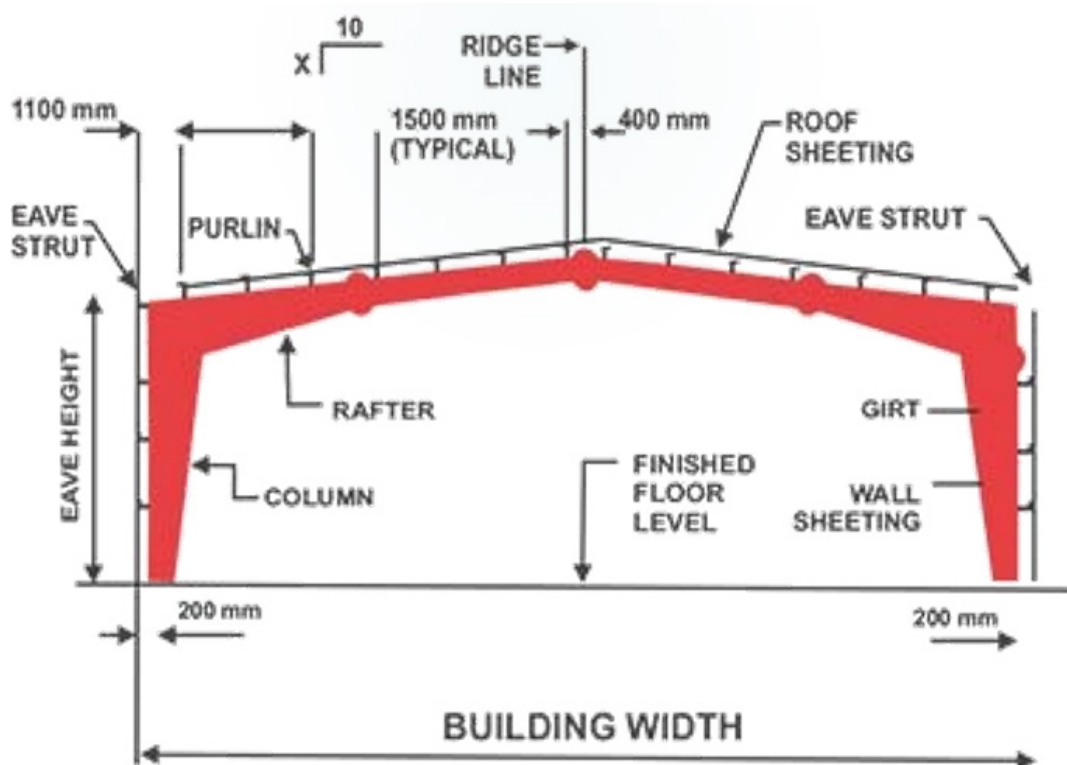
Pre Engineered Building



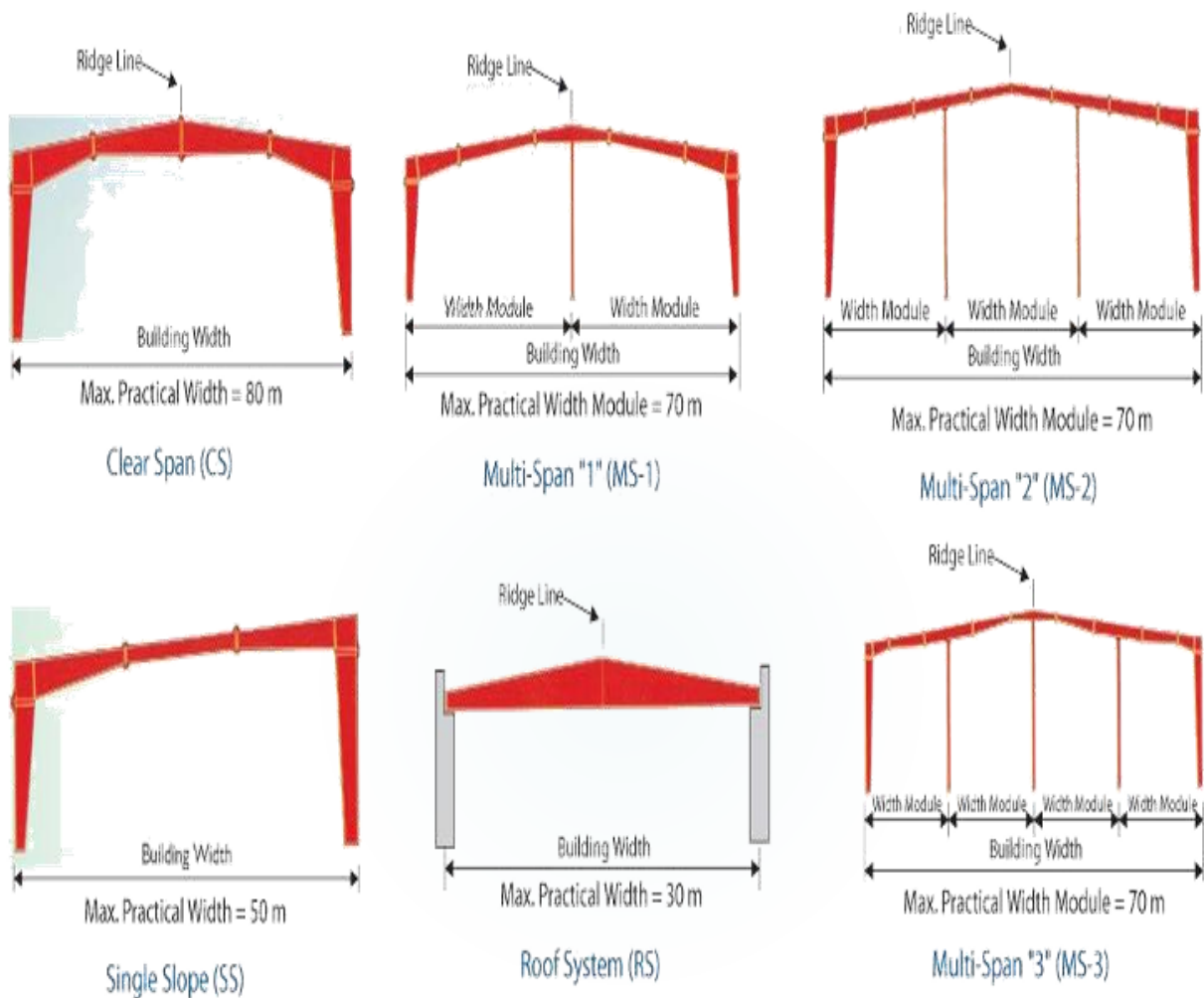
BUSINESS AREAS & SERVICES

Rigid Frames :-

The word rigid means ability to resist the deformation. Rigid frame structures can be defined as the structures in which beams & columns are made monolithically and act collectively to resist the moments which are generating due to applied load. Rigid frame structures provide more stability. This type of frame structures resists the shear, moment and torsion more effectively than any other type of frame structures. They are I-section members (web and flange) interconnected with connection bolts. Vertical structure members are called columns and Horizontal members which are connected with columns are called rafters. This is so called as primary framing system. According to its width, the primary framing system is the same on both sides of the central ridge line. The primary framing system can be more complex with asymmetrical features along with some complex arrangements also. These framing systems are manufactured as per client requirement.



BUSINESS AREAS & SERVICES

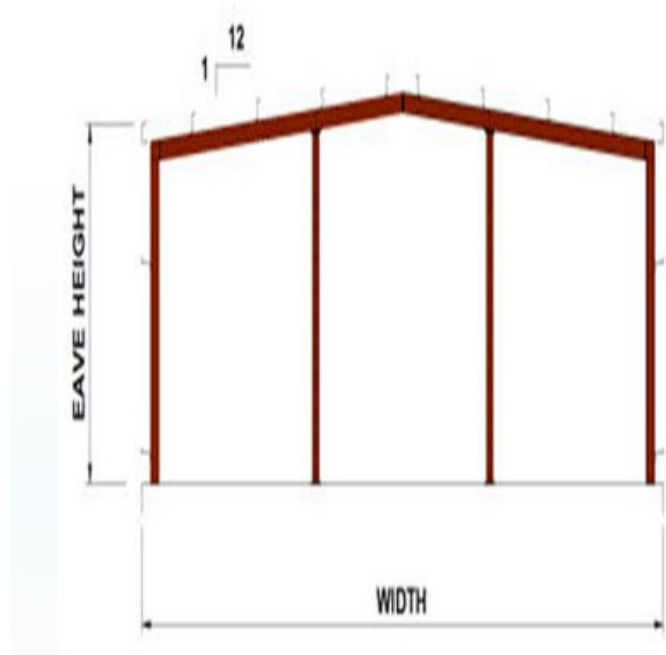


These primary members are available in standard ready-made shapes or as channels also for the complicated primary framing system. Other members of a primary framing system are End Wall Frames, Crane Brackets and Wind Bracing. In a Pre-Engineered Building, other than the primary framing system, secondary framing system, sheeting, and many add-ons can be done as per client requirement. These add-ons are crane beam, canopies, trusses, fascias, and Roof extension and mezzanine floors.

BUSINESS AREAS & SERVICES

End Wall Frames:-

End Wall Frames are one of essential structural components of Primary framing system, an important member of Pre-Engineered Buildings. Intermediate column of End wall frame distribute the load of building equally. A primary framing system is the main member of a Pre Engineered Building. Usually one part of a primary framing system is similar to the other part on either side of the ridge line. The structural systems including the primary framing system vary in form and size in accordance with the preferences of the clients. End wall Frames can be designed in two types, expandable rigid frame or post end beam depend on client requirement for future expansion



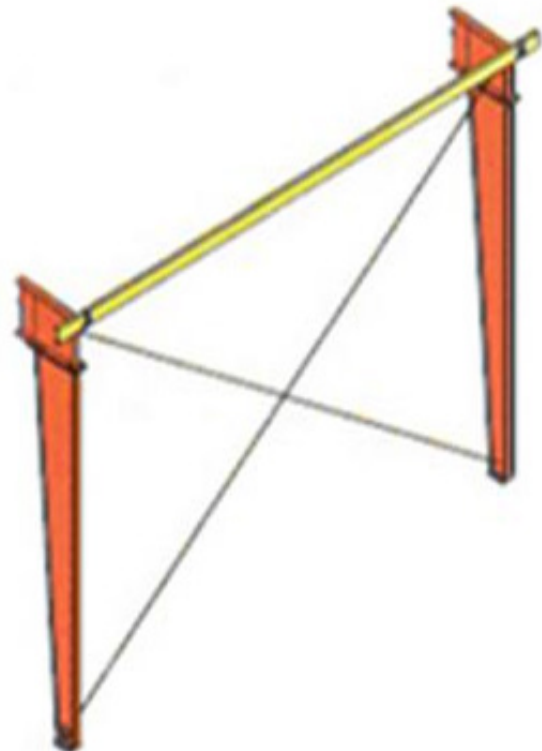
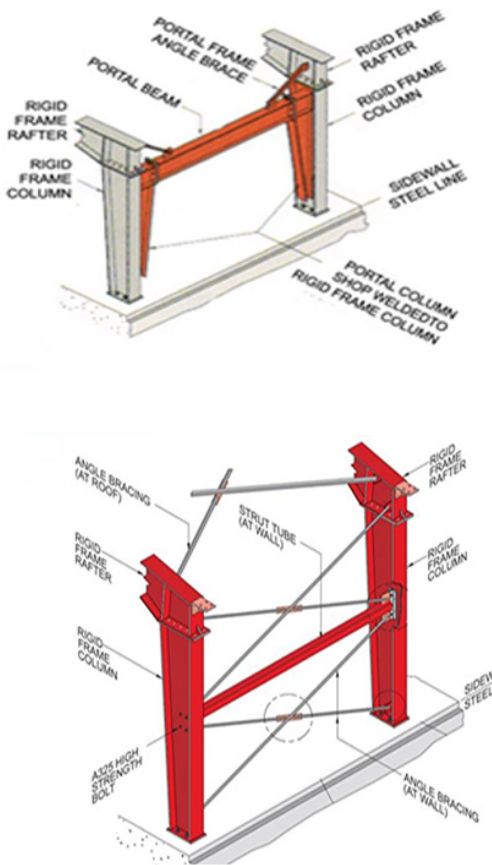
Wind Bracing :-

Wind Bracings are cross primary supporting members that transfer the loading or seismic forces equally on columns and support all the structural units of a Pre-Engineered Building. Nowadays steel building constructions steel has replaced the heavy conventional structural materials and concrete structure.

BUSINESS AREAS & SERVICES

End Wall Frames:-

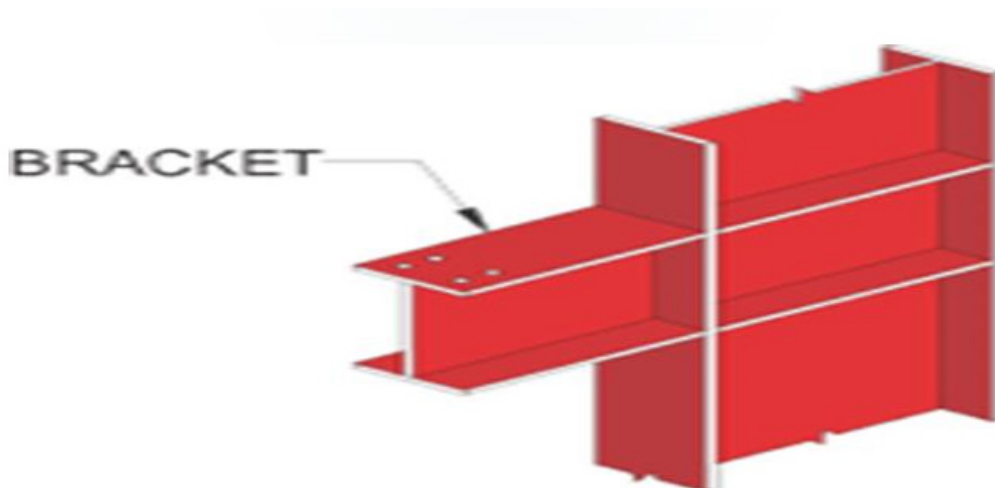
The steel buildings have become extensively popular only due to their durability, adaptability and agility. Wind bracing, an essential component of a primary framing system offers vertical strength to the building for holding up the entire pre-engineered structure. Wind bracing features intersected brackets present inside and roof walls in one or multiple inlets, which depend on the span and total weight of the building. Wind bracing, an essential element of a primary framing system, along with the other structural elements of a primary framing system, is manufactured as sturdy and light weight personalized components in accordance with the customer's preference and purpos



BUSINESS AREAS & SERVICES

Crane Brackets :-

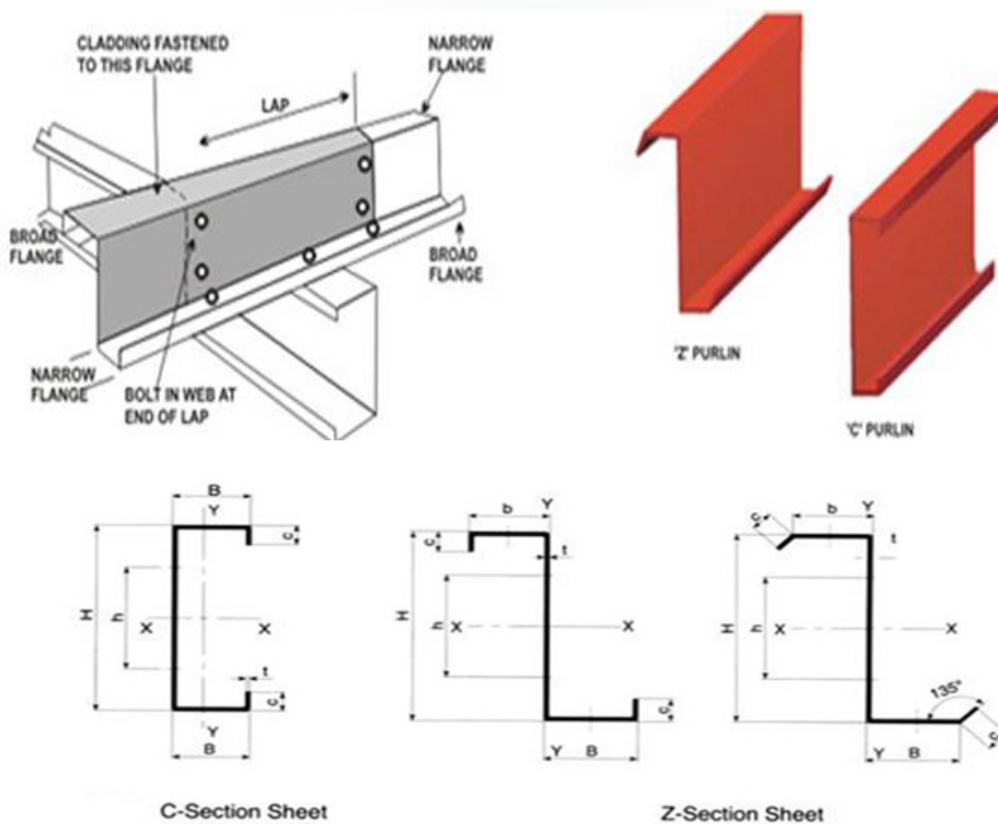
Some of the essential structural pieces required in a primary framing system are the crane brackets. The crane brackets are the usual effective members holding up the cranes beams. The crane brackets in a primary framing system carry the load of the crane joists or crane beams and are attached to the columns. The crane brackets joined to the vertical columns substitute the use of an overhead crane brackets. The crane brackets are the most affordable components for supporting the crane joists along the vertical columns. The crane brackets can also be separately used in inlets. The columns holding the crane brackets should be strong enough and the space overhead the crane bracket should lack all obstacles. Crane brackets are fixed with strong connecting and fixing bolts. The crane brackets are the pre-engineered parts of a building to be used with strong beams. Crane brackets can be installed and adjusted conveniently on columns.



BUSINESS AREAS & SERVICES

Roof Purlins :-

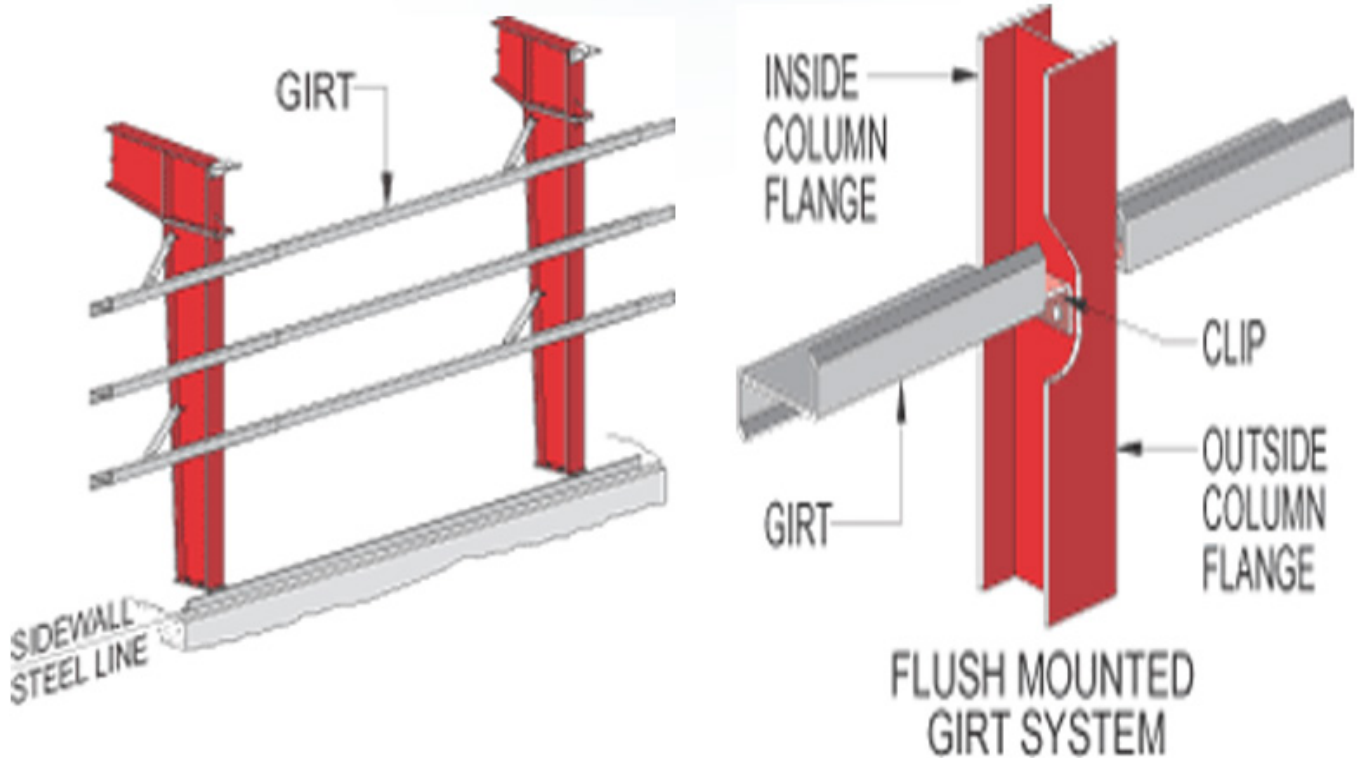
The secondary framing system in a pre-engineered building is comprised of specific components like the roof purlins, wall girts, eave sturt etc. Roof purlins are C or Z shape cold form structured components of a secondary framing system with variable depth and thickness in accordance with the customized designs. Cold form members are less ductile in nature. The roof purlins are attached to the overhead projections of the roof beams or Rafters with the help of bolts. The roof purlins are connected in a continuous fashion and spacing between purlin to purlin are based on design. The primary and secondary framing systems together with attachable sheeting form the basis of the pre-engineered buildings. This Roof purlins are cold form structure it can be Pre galvanize or Painted without galvanization.



BUSINESS AREAS & SERVICES

Wall Girts :-

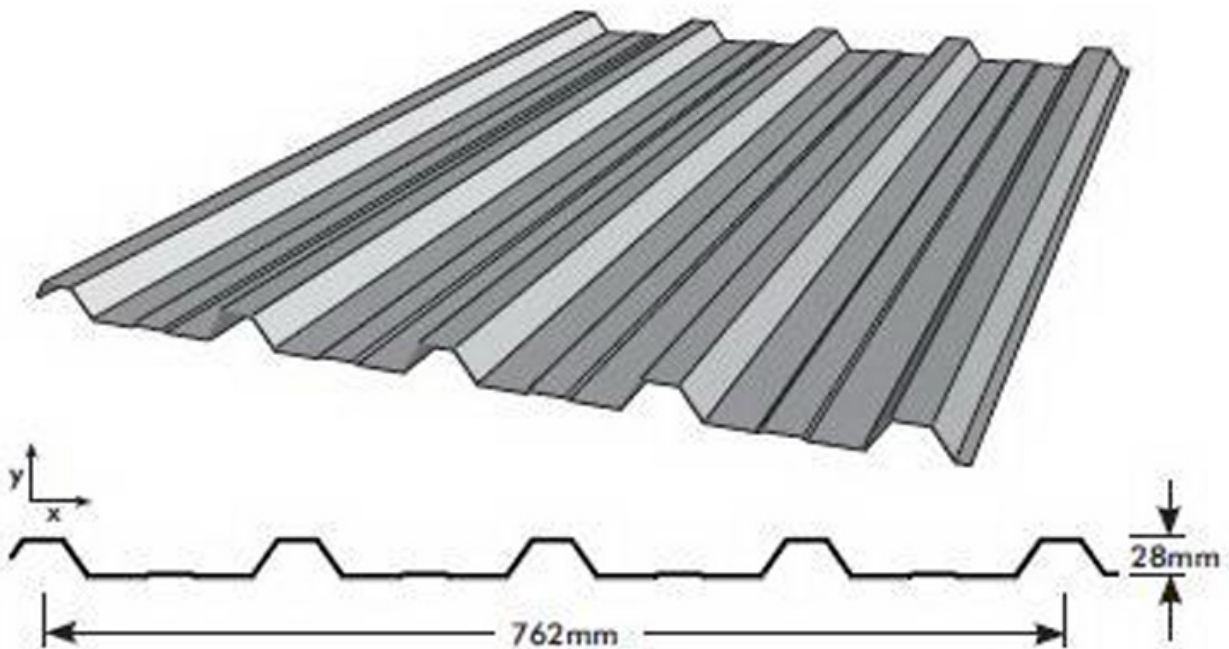
The wall girts are cold formed Z shape members, which are of various thickness and variable depth depend upon the design. The wall girts are connected to the external extension of the columns along the walls. Clips already made along the columns join the wall girts to the outer projection of the side wall lines, the network of wall girts being joined to the clips. The wall girts are vital to the secondary framing systems, which along with the primary framing systems and the connectible sheeting form the preengineered structure. The role of the secondary framing system is to hold up the wall sheeting and the roof with the different components that are indispensable to a secondary framing system. The components of the secondary framing system also pass on their total load onto the primary framing components. The chief components of a secondary framing system, other than the wall girts, are the eave struts, Wall girts are also Cold form member it can be pre galvanize or Painted.



BUSINESS AREAS & SERVICES

High Rib :-

It is important to keep your Roof sheet strong and well designed. Our High rib bare galvalume sheeting is well suited for same, this High rib profiles are with 28 mm rib and of 26 gauges. These panels are fixed on Roof with SDS (Self Drilling screws). This high rib sheeting can be profiled with variable depths and sizes. This high rib profiles are best suited roofing solution for all industrial buildings, This profiles have higher capacity to shed water and have Higher strength too.



BUSINESS AREAS & SERVICES

Low Rib :-

It is important to keep your Cladding strong and well designed. Low ribs are helpful for this purpose. Low ribs can also be suitable for partition wall and liner panels. Our Low rib profiles are with 15 mm rib and of 26 gauges. If you are looking for a low rib, which is easy to install, it is a low rib panel, which gives an attractive and clean finish to your building. It contains minimally visible stitching screws, which makes it more suitable to fix on wall. This panel maximizes the potential of steel frames to support the building structure.



Standing Seam :-

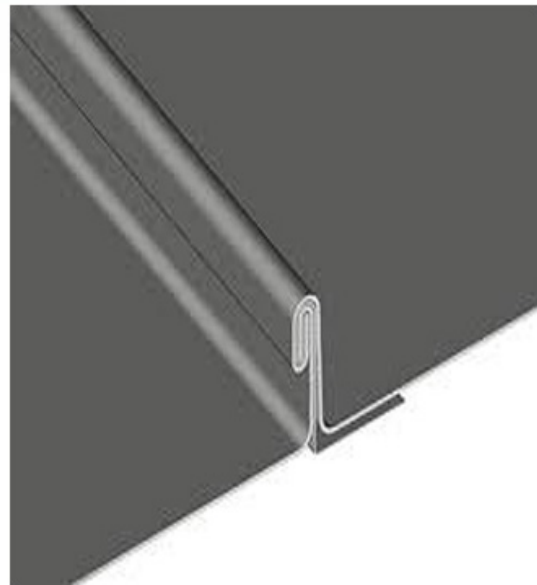
Standing seam is where the roof panel seam is mechanically field rolled to complete the 360 degree double lock seam- creating the tightest seam available today, thus assures weather tightness and eliminates the chances for even tiny capillary leaks. This RSS-472 roof system is the most specified and most reliable standing seam roof system in the present market.

BUSINESS AREAS & SERVICES

Roof panel seam is mechanically field rolled to complete the 360 degree double lock seam- creating the tightest seam available today, thus assures weather tightness and eliminates the chances for even tiny capillary leaks. This RSS-472 roof system is the most specified and most reliable standing seam roof system in the present market

Standing seams consist of vertical metal panels comprised of two vertical seams in each panel. While these seams are crimped, the joints get sealed. It prevents the collection of water and moisture on the roof surface that stops the leakage.

The installation process of standing seam roof is easy. They can be attached with the help of clips underneath the roofs. The clips provide the space for expansion and contraction of the roof, which is a natural process during changing weather. Since standing seams use metal in its production with double locking system, you can ensure its durability for using as roofing material much more than normal Bare Galvalume.



BUSINESS AREAS & SERVICES

Turbo Ventilators :-

Circular ventilators fabricated with Galvalume sheet or SS with Variable dia. These ventilators are fixed on roof top and rotate with the help of natural wind. This is an important component for air ventilation in industrial buildings.



Turbo Ventilators :-

Elongated ventilators fabricated with Galvalume sheet are fixed on roof top at the ridges. This is the most important component used for Air ventilation. It can be fixed continuous throughout the ridge of the building and also can be in fixed at definite interval. The Ridge vent allows heat and humidity to escape out from the building



BUSINESS AREAS & SERVICES

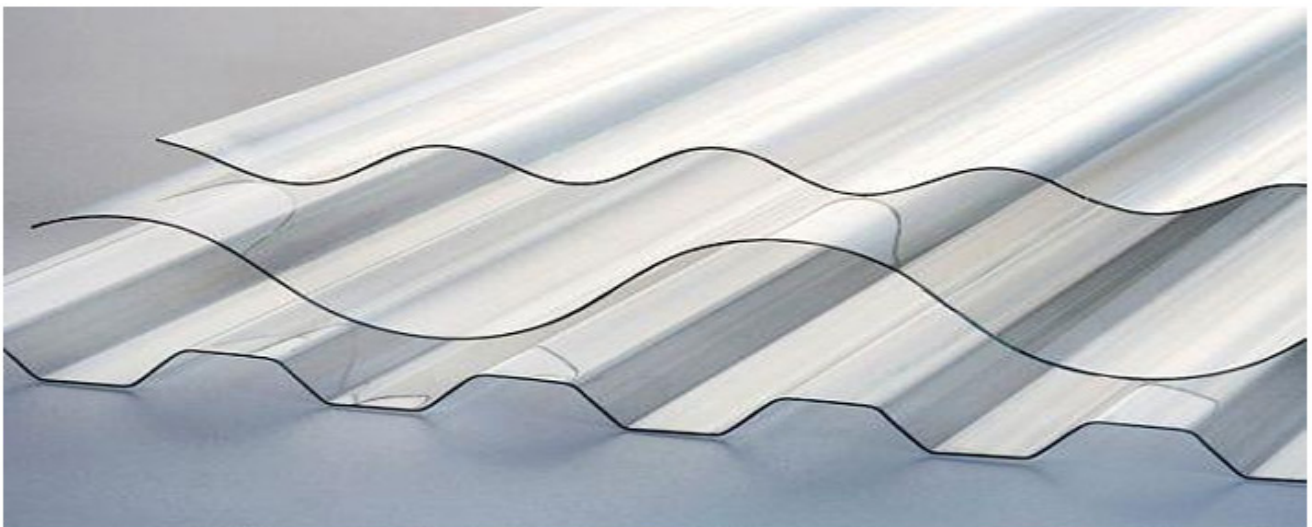
Louvers :-

Louvers are made up of steel or aluminium and are available with variable designs. The blades of louvers are designed in such a way that it helps in air ventilation and also restricts dust and water to enter inside the building. Louvers are designed, supplied and installed as per client's requirement.



Stair Case :-

Skylight panels are transparent plastic fibre material, fixed on the roof or wall for natural lighting. Skylights are available in variable thickness. The profile of skylight should match exactly with sheeting profile.



BUSINESS AREAS & SERVICES

Insulation :-

Insulations are fixed in the building below the roof sheet and wall cladding as per client's requirement and supported by wire mesh / fibre mesh. Insulation helps to prevent the transmission of heat inside the building at certain level. Variant types of Insulations are available in the market which can be fixed according to building and client requirements.



BUSINESS AREAS & SERVICES

Sliding or Roll up :-

Sliding or Roll up door can be operated manually or it can be motorized also. Design and size of these doors depend upon the building type and client's requirement.



Stair Case :-

Staircase are made up of HR plate/ chequered plate. It can also be fabricated through standard ISMC sections. It can also be made and provided by SS hand rail. Staircases are used in case of Mezzanine floor building.



» Why Choose Us - MJ Enterprise

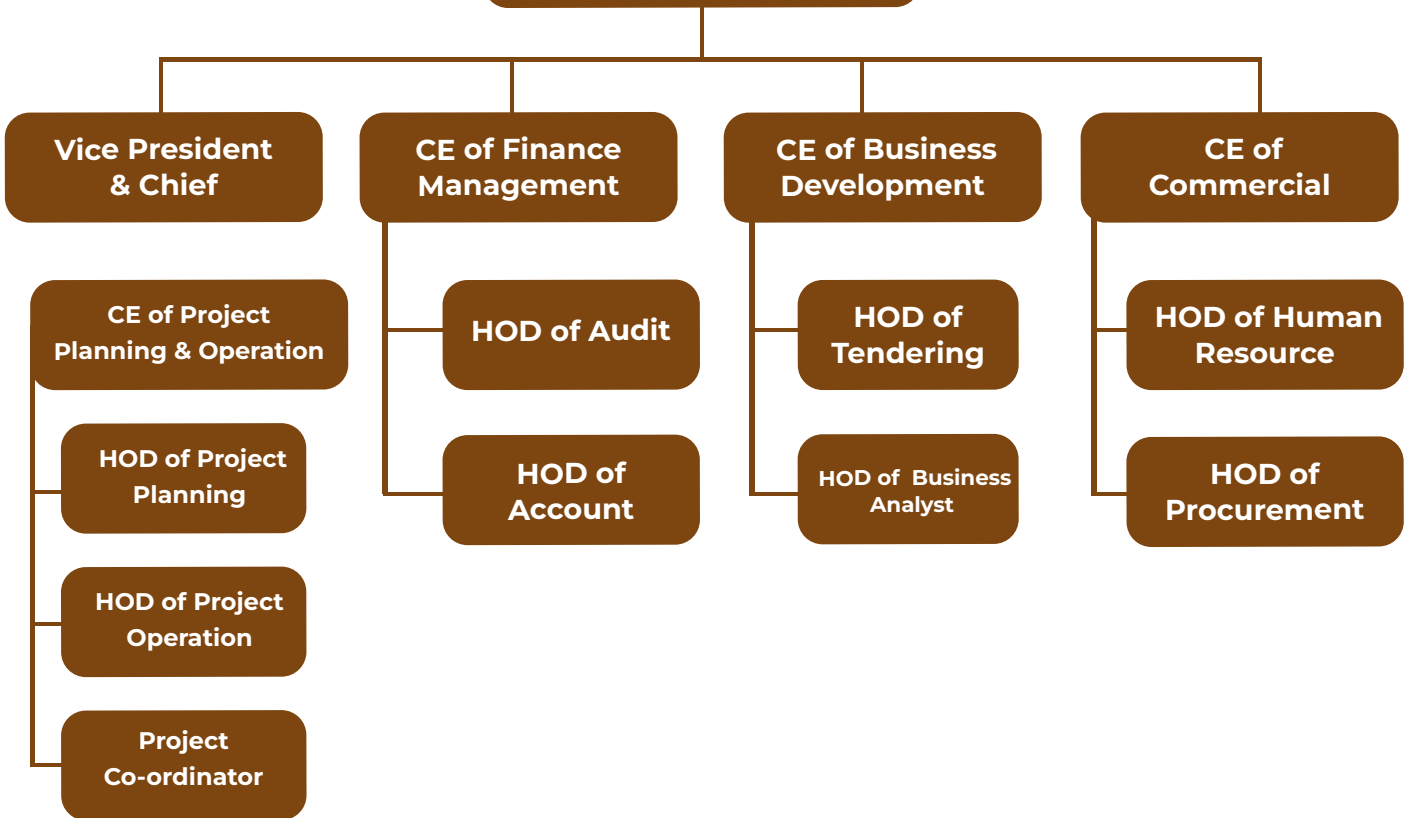
At MJ Enterprise, we are committed to delivering the highest quality services across a wide range of industrial needs. Here's why you should choose us:

- 1. Proven Expertise:** With over five years of experience, MJ Enterprise has established itself as a leader in industrial fabrication, painting, and construction in Gujarat. Our expertise spans across metal fabrication, structure building, and industrial painting, ensuring that every project is handled with precision and professionalism.
- 2. Comprehensive Services:** We offer a full spectrum of services, including metal and stainless steel fabrication, structure fabrication, and machine shop precision work. Whether it's heavy structures, pipeline installations, or custom metal works, we have the skills and tools to meet your specific needs.
- 3. High-Quality Standards:** Quality is at the core of everything we do. Our products and services comply with both local and international standards, ensuring durability and reliability. From stainless steel handrails to complex industrial painting projects, we use only the best materials and advanced techniques to achieve exceptional results.
- 4. Customer Satisfaction:** We are dedicated to meeting and exceeding our clients' expectations. Our focus on providing high-quality systems, coupled with personalized customer service, ensures that we build long-term relationships with our clients. Satisfaction is guaranteed with every project, no matter the size.
- 5. Safety First:** We prioritize safety in all our operations. Our stringent safety policies and programs ensure a secure working environment for our employees and clients. We educate our team on safe working practices and enforce the use of proper safety equipment to prevent accidents.
- 6. Tailored Services:** We understand that every project is unique. That's why we offer tailored solutions to meet your specific requirements. Whether it's customized fabrication work or specialized industrial painting, we work closely with you to deliver exactly what you need.

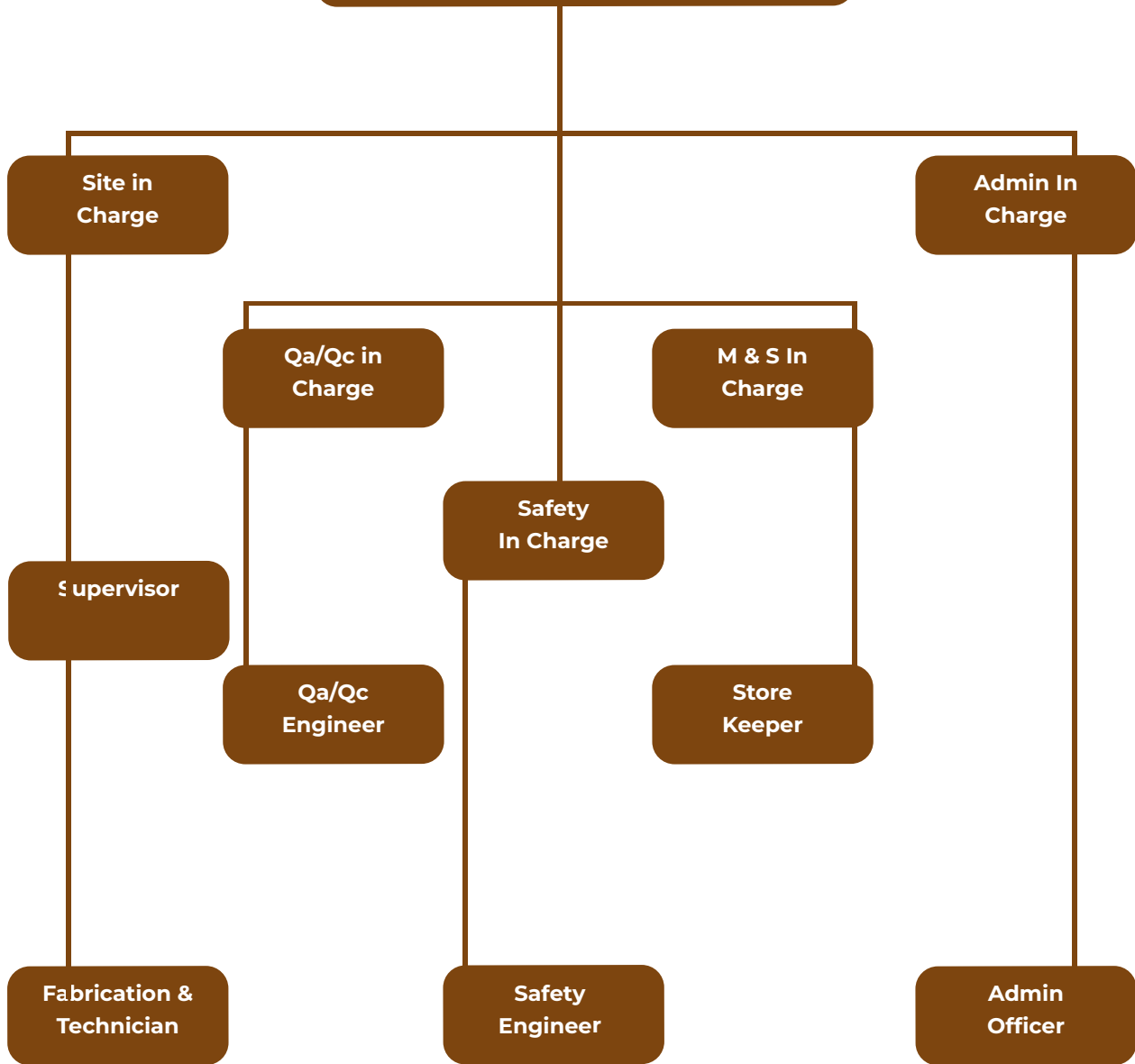
By choosing MJ Enterprise, you're partnering with a company that values quality, safety, and customer satisfaction above all else. We are ready to take on your most challenging projects and deliver results that speak for themselves.

CORPORATE ORGANIZATION STRUCTURE

Managing Director



Project Co-Ordinator



BUSINESS AREAS & SERVICES

MJ enterprise Inc is a construction company that delivers programs, projects and construction related services in a committed and innovative manner. We serve the clients from project conception till its commissioning and completion work. We bring all the leading workmanship under one roof and deliver the best result to our client's service. We are the leading building company and can take up any complex projects from diverse regions or complementary sectors to transform it into a powerful force solution.

We are competence for below works :

Mechanical Works:-

- Fabrication & Erection of Structure of the Plant Structure
- Fabrication & Erection of Pressure Vessels
- Chemicals Plant & Maintenance
- Pipe Line Fabrication Work (MS, SS, & HDPE)
- IBR Approved Piping Works
- Hot & Cold Insulation Works
- Lifting, Shifting & Erection Work of Equipment (Rotary & Stationary)
- Erection of Chimney
- Blasting & Painting Works
- Shutdown & Maintenance Works
- Pre Engineering Buildings



Our Competence

Civil Works

- Construction of Buildings,
- Reservoirs, U/G RCC Tanks, Tunnels, Sumps, Culverts,
- Heavy Foundation, Beam & Columns,
- A/G Water Tanks
- Boundary Walls, Fencing
- AMC, ARC & Maintenance etc

Civil Works

- All type of Ht/Lt switchgear & cabling insatiable and cabling
- Transformer erecting and testing
- HT Breaker and HT/Lt panel Installing
- Indoor/outdoor wiring
- Residential and commercial complex wiring
- Fire alarm system wiring
- Industrial & domestic lighting system designing & development

Detail Engineering

- Details Engineering (Drawing) of Piping
- Details Engineering (Drawing) of Structure
- Details Engineering (Drawing) of Equipment & Tan

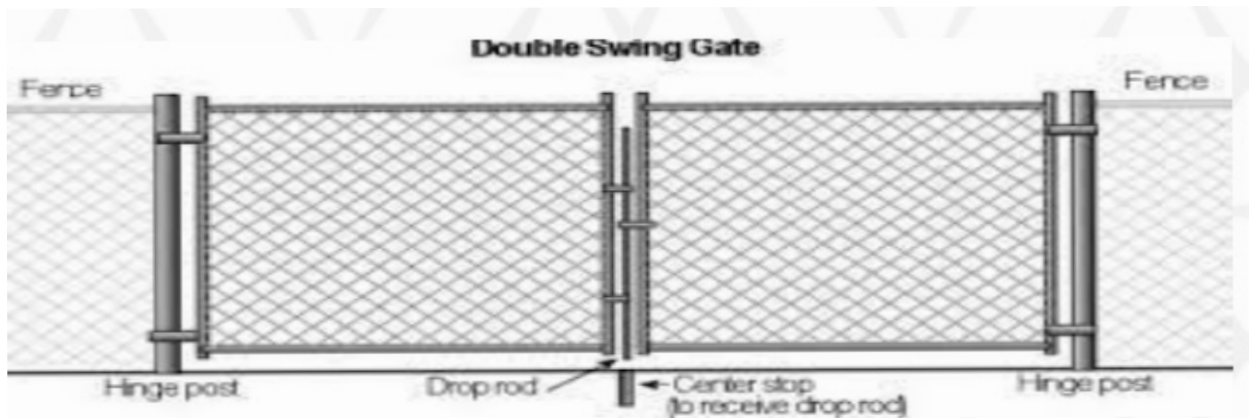
PEB Work

- Primary Framing System
- Secondary Framing System
- Roof Sheeting
- Wall Cladding
- Accessorie

This profile briefly describes the ability of the ASIAN SKY to consistently provide services as per pre-determined specifications and designs complying with regulatory requirements of our customers.

D. CHAIN LINK FENCE

CHAIN LINK GATE FENCE - Drawing Construction details



METAL FENCE FOR YARD



» Machine Shop Precession

MJ Enterprise Machine shop is equipped with its precession machinery mainly operates as support for fabrication shop, providing necessary service in machining & fixture, dies, roller and spare parts to maintain fabrica

These functions, the machine shop with its technical expertise and quality workmanship makes all types and size of anchor bolt, standard bolts, flanges, shafts etc.

MJ Enterprise Measure our success by our ability to build long term client relationship and contribute to their long term success

MJ Enterprise Machine shop Facilities:-

- Lathe Machine
- Milling Machine
- Shaping Machine
- Cutting Machine
- Bending Machine
- Sheet Rolling Machine
- Drilling Machine
- Aluminum & Electric Welding
- Argon Welding



» INDUSTRIAL & RESIDENT PAINTING

MJ Enterprise locally-owned and managed painting contractor in Gujarat, providing superior quality painting services for over 5 years.

Working in multiple teams, uniformly dressed and each with its own team-leader, we can efficiently handle multiple projects simultaneously without losing our signature "personal touch". We obtain all our products directly from the dealer to ensure competitive pricing. With a vast range of products to choose from, quotations can be tailored to suit each individual client.

MJ Enterprise offer budget calculation services for larger projects.

We offer a product and workmanship guarantee at no additional charge.



E. WHY US IN PAINTING

A recap of why you should seriously consider our company for your painting needs:-

- We have over 5 years of experience.
- We specialize in all commercial and industrial painting.
- We have knowledge of specialized coatings application.
- We are familiar with latest equipment and techniques.
- We are able to successfully work in challenging environment.
- No job is too large or small
- Satisfaction guaranteed

F. SERVICE WE OFFER

A recap of why you should seriously consider our company for your painting needs:-

- Interior painting
- Exterior painting
- Damp proofing Re-plaster
- Roof painting
- Commercial painting & Industrial painting Rustic painting
- Dholpur Texture
- Structural Painting
- Interior decorative painting
- Deco Painting
- Polish
- Epoxy Flooring
- Coing
- Blasting painting
- Spray Painting Scaffolding



» SAFETY POLICY

To archive an injury free accident free atmosphere for the personnel both in the factory and the project sites.

By convincing staff that accidents are caused and that they do not just occur and that it is possible to prevent them. Educating the personnel in safe working methods.

By enforcing strictly all safe working methods.

By seeing that all personnel use safety equipment like hard safety helmet, safety belts, gloves, goggles, masks, face shields, ear muffs, safety etc while working.

By seeing that the equipment supplied to them is of proper standards. • By using proper scaffolds and ladders when working at heights.

By educating them about the inherent hazards in the nature of the work while they are engaged in working with hazardous media.

Educating them about environmental issues.



» SAFETY PROGRAM

- Train 2-4 person in each shift o co-ordinate first aid in case of accident/injury.
- Communication s fe working prracticeso all personnel.
- Train personnel on fire fighgting.
- Train personnel to handle any hazardous material.
- To maintain all fire fighgting equip t and keep them in ready to use condition.
- To keep all fire fighgting equip t in their designated places.
- To refill or recondition the e ex extingui s well before their expiry in a phased manner.
- To see that all employees use safety equipment like Gloves, Shoes, Coveralls, helmets, goggles etc regularly.
- To have a periodic health check-up for all personnel.
- To familiarize the safety personnel and safety Head with states emergency contact number and emergency procedures.
- To have an emergency procedures for the company in tune with the emergency procedures.



» Gallery



» OUR CLIENTS



Galpha Laboratories Limited




AiGUÁ

SPRINKLER & HYDRANT INDIA PVT. LTD.




Contact Us

 +91 73833 46096 / 81416 17071

 info@maajwalaenterprise.com | purchase@maajwalaenterprise.com

 support@maajwalaenterprise.com

 67-atmiya Residency, Near Sarangpur,
Rajpipala Road, Ankleshwar - 39300